

21

Betrayed!

So

[Cue] Max: "Dear Max. Rio is everything you said it was and more. [Music in]"

Dictated

Ulla and I think of you every chance we get. [Music in] In the morning when we have breakfast on our terrace. Many different herrings [Music in] and in the evening when we samba together in the moonlight [Music in]



Sorry, must run. Ulla's waiting. [Music in] It's almost eleven. [Music in] Wish you were here, Leo." [Music in]



16 Colla Voce

Max:



Just like Cain and A - bel you pulled a sneak at - tack I



thought that we were broth - ers then you stabbed me in the back Be -

Fast 4



- trayed Oh boy I'm so be - trayed Like

24



Sam - son and De - li - lah your love be - gan to fade I'm

#21 - Betrayed

26 (Max:) 27

Musical staff for measures 26 and 27. Measure 26 starts with a treble clef, a key signature of one flat (B-flat), and a common time signature. The melody consists of quarter notes: G4, A4, Bb4, C5, Bb4, A4, G4. Measure 27 continues with quarter notes: F4, E4, D4, C4, Bb3, A3, G3.

cry - ing in the hoose - gow you're in Ri - o get - ting laid Be -

28 29 30 31

Musical staff for measures 28 through 31. Measure 28 has a whole note G3. Measure 29 has a whole note F3. Measure 30 has a whole note E3. Measure 31 has a whole note D3.

- trayed _____ Let's face it I'm be - trayed

32 33 34 35

Musical staff for measures 32 through 35. Measure 32 has a whole note G3. Measure 33 has a whole note F3. Measure 34 has a whole note E3. Measure 35 has a whole note D3.

Boy, _____ have I been tak - en _____

36 37 38

Musical staff for measures 36 through 38. Measure 36 has a whole note G3. Measure 37 has a whole note F3. Measure 38 has a whole note E3.

Oy, _____ I'm so for - sak - en I

39 40

Musical staff for measures 39 and 40. Measure 39 has a whole note G3. Measure 40 has a whole note F3.

should have seen what came to pass I should have known to watch my ass

41 42

Musical staff for measures 41 and 42. Measure 41 has a whole note G3. Measure 42 has a whole note F3.

I feel like O - thel - lo _____ Ev - 'ry - thing is lost

43 44

Musical staff for measures 43 and 44. Measure 43 has a whole note G3. Measure 44 has a whole note F3.

Le - o is I - a - go _____ Max is dou - ble - crossed

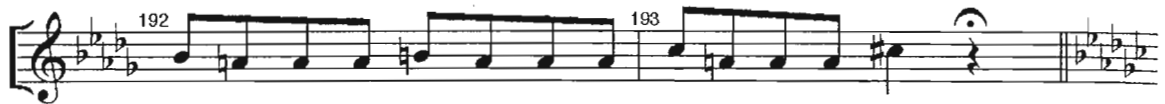
#21 - Betrayed

190



Then you ran to Ri - o and you're safe - ly out of reach

molto rall.



I'm be - hind these bars, you're bang - ing Ul - la on the beach

194

Slowly-In 8

In 4

accel. poco a poco

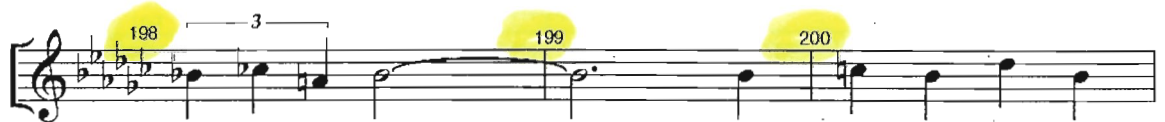


Just like Jul - ius Cae - sar was be - trayed by Bru - tus



Who'd think an ac - count - ant would turn out to be my Ju - das

A tempo

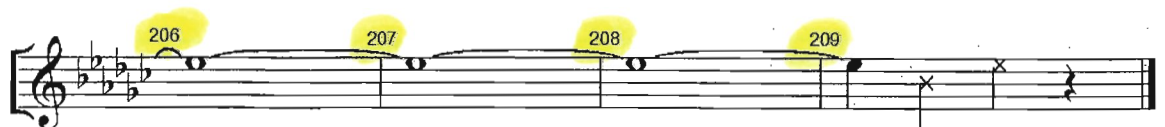


I'm so dis - mayed _____ Is this how I'm re -

204 Presto



- paid? _____ to be be - trayed! _____



Be - trayed!

Applause Segue

#21 - Betrayed